

# About IFMA and the Northeast Wisconsin Chapter



International Facility Management Association (IFMA) is the largest and most widely recognized professional association for facility management. Globally, IFMA certifies facility managers, conducts research, provides educational programs, recognizes facility management degree and certificate programs and produces World Workplace, the largest facility management-related conference and exposition.

The Northeast Wisconsin Chapter of IFMA was chartered in 1992. Since then our membership has tripled and represents facility managers from all facility types – corporate, education, healthcare, manufacturing, public utilities, and government.



Our chapter carries out the IFMA mission to provide information and educational opportunities to corporate, contract, government and healthcare facilities managers.

#### We do this by:

- Holding monthly meetings from September to June
- Distributing a monthly newsletters
- Touring area facilities
- Holding networking events
- Participating in the statewide Tri-Chapter Symposium

***Our success as an organization depends on your sponsorship.***

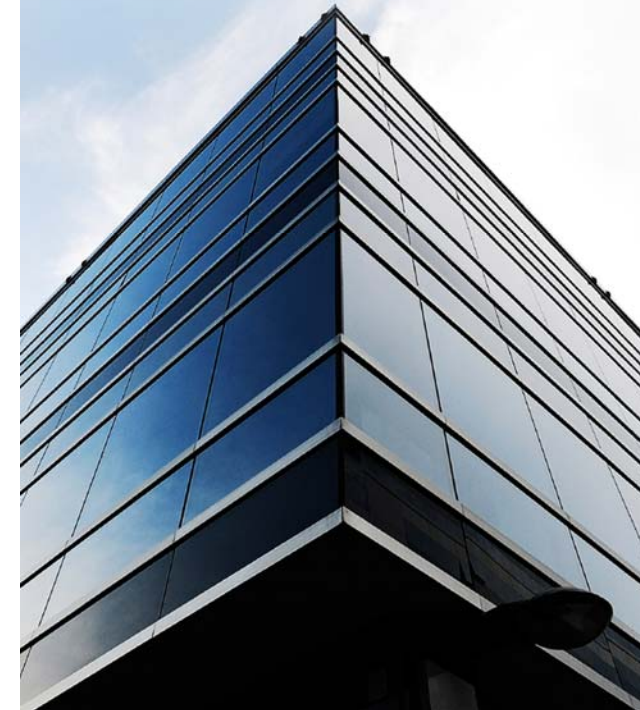
***Please take advantage of this opportunity to not only support facilities management, but also to gain valuable exposure for your products and services.***

## Member Companies

4Imprint  
Affinity Health System  
Appleton  
Apria Healthcare  
Ashwaubenon School District  
Associated Bank Corporation  
Baylake Bank  
Brown County  
C.B. Richard Ellis Global Services  
City Of Appleton  
FBG Service Corporation  
Fox Valley Technical College  
Georgia Pacific Corp.  
Good Humor - Breyers Ice Cream  
Green Bay Community Church  
Humana, Inc.  
Integrus Energy Group  
JJ Keller & Associates, Inc  
KI  
Kimberly-Clark Corporation  
Lomira School District  
M & I Support Services Corporation  
McCain Foods USA  
Miron Construction Company Inc.  
North Meadows Investment Ltd.  
Northeast Wisconsin Technical College  
Oneida Tribe of Indians of Wisconsin  
Pierce Manufacturing  
Plexus  
Prevea Clinic  
Saint Norbert College  
Schneider National, Inc.  
Schreiber Foods, Inc.  
Thrivent Financial for Lutherans  
Trammell Crow Company  
United Health Group  
University of Wisconsin-Green Bay  
Wells Fargo Properties Inc.

## SPONSORSHIP PROGRAM INFORMATION

GREAT FACILITIES ...GREAT PEOPLE



## Sponsor Pledge Card



### Sponsorship Program

Today's Facility Managers are responsible for the planning, construction, and the ongoing management of buildings, personnel and budgets. Our chapter supports these activities and appeals to businesses, like yours, that provide a high level of service to members in these positions. Funds collected will support: education, activities, programs, local projects, local student scholarships and other charitable donations.

Please contact Jean Roskams at 920-264-7879 or [jean.roskams@target.com](mailto:jean.roskams@target.com) for more information.

Please make a commitment to support excellence in facility management.

To make a contribution, supporting the facility management community, please complete and return this card.

#### Yes, I want to be a sponsor!

|                           |                 |
|---------------------------|-----------------|
| _____ Gold                | \$1200          |
| _____ Silver              | \$600           |
| _____ Bronze              | \$400           |
| _____ Golf Outing         | \$250           |
| _____ Other Amount        | \$ _____        |
| <b>Total Contribution</b> | <b>\$ _____</b> |

| Sponsorship Categories & Benefits  | \$400 Bronze   | \$600 Silver   | \$1,200 Gold    |
|--|----------------|----------------|-----------------|
| Logo/Link listed on "Home" page of <a href="http://www.ifmanewisconsin.org">www.ifmanewisconsin.org</a>                |                |                | ◆               |
| Recognition at All Chapter Meetings by the President   |                |                | ◆               |
| Free Admission to Tri Chapter (1 person)   |                |                | ◆               |
| Feature Article in One Newsletter  |                |                | ◆               |
| One 5-minute introductory presentation for your business at a Monthly Meeting  |                | ◆              | ◆               |
| Quarter Page Ad in Monthly Newsletter  |                | ◆<br>1 Ad/Qtr  | ◆<br>All Issues |
| Free Admission to Chapter Meetings (1 person)  | ◆<br>1 Meeting | ◆<br>1 Mtg/Qtr | ◆<br>All Mtgs   |
| Logo/Link/Description listed on "Sponsor" page of <a href="http://www.ifmanewisconsin.org">www.ifmanewisconsin.org</a> | ◆              | ◆              | ◆               |
| Email "Thank You/Recognition" to membership from the President for being a sponsor                                     | ◆              | ◆              | ◆               |
| Listing on Sponsor Tent Signage  | ◆              | ◆              | ◆               |
| Sponsorship Name Badge   | ◆              | ◆              | ◆               |

Representative: \_\_\_\_\_

Company: \_\_\_\_\_

Address: \_\_\_\_\_

City, State, Zip: \_\_\_\_\_

Business Phone: \_\_\_\_\_

Business Fax: \_\_\_\_\_

Email Address: \_\_\_\_\_

Please mail this card, along with your payment to:

Treasurer  
IFMA – Northeast Wisconsin Chapter  
P.O. Box 792  
Green Bay, WI 54305-0792

**Thank you in advance for being an IFMA Sponsor!**